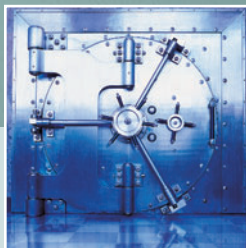




YOUR SECRETS ARE SAFE WITH US.

Data-Fense™ Secure Raceway Systems:
The toughest, most secure raceways.
Anywhere.



WIREMOLD

 **legrand®**



Secure

INTRUDER-PROOF.

The Data-Fense™ Secure Raceway System is your best defense against attack to your network.

The base and cover lock together. All base components and fittings are permanently connected. And unlike standard raceway, Data-Fense raceway cannot be disassembled with a screwdriver. There's only one way to access the system – through pull boxes, or access points, that are secured by GSA-approved, hardened padlocks. Plus, all the seams in the system are on the front of the raceway. So if anyone tries to penetrate the base or cover, you'll spot it right away. Data-Fense raceway was built to outsmart intruders.



Easy to install

MISTAKE-PROOF.

Some security systems require specialized training for proper installation. Data-Fense raceway doesn't. Its design is based on our widely used 4000™ Series raceway. So it feels familiar to contractors and uses commercial pathway installation techniques. That means there's no need for costly training or certified installers. Any qualified contractor – including your in-house personnel – can design and install a Data-Fense Secure Raceway System, with complete assurance that it will provide the security and performance your application demands.



Built tough

AND PRACTICALLY BULLETPROOF.

Data-Fense raceway isn't just smart. It's tough too. All its components are fabricated from durable, 16-gauge steel. All the fittings and enclosures are factory welded with a continuous seam. And every entrance point in the system accommodates a padlock that meets the Department of Defense Lock Program standards for security, performance and long-term reliability. Nobody gets in, unless you want them to.



ADD AN ADDITIONAL LAYER OF DEFENSE.

Ortronics® Secure Keyed LC Fiber Solutions are used where multiple networks with different security level access requirements are co-located. Secure Keyed LC Fiber Solutions help avoid unauthorized connections and system misuse by preventing inadvertent or unauthorized access to optical fiber network ports.



Unique wall mounting brackets keep the back of the raceway accessible to check for tampering.



Transition fittings allow for a smooth connection between raceway and channel sizes.



Obstacle Avoidance fittings speed installation by allowing the raceway to bypass existing architectural structures.



Data-Fense Raceway Systems can accommodate a variety of methods to feed the system.

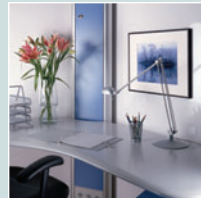
**Data-Fense Secure
Raceway Systems are
part of the many secure
solutions from Legrand.**



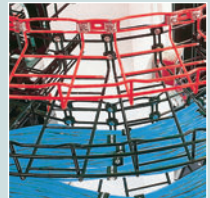
Perimeter



Infloor



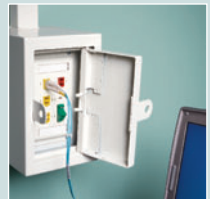
Open Space



Overhead



Wireless



Keyed Connectors

www.wiremold.com

Wiremold/Legrand

60 Woodlawn Street
West Hartford, CT 06110
Telephone: 1-800-621-0049
Fax: 1-860-232-2062

In Canada

570 Applewood Crescent
Vaughan, Ontario L4K 4B4
Telephone: 1-800-723-5175
Fax: 1-905-760-1733

WIREMOLD

