

Making your
A/V job easier.



Poke-Thru
Devices



Tabletop
Portals



Floor
Boxes



Architectural
Columns



Ortronics

Wiremold

MEET LEGRAND

As the global leader in wiring devices and cable management, Legrand delivers innovative solutions that are the backbone of the electrical and communications infrastructure.

5,000
active patents

Over 70%
market share for cable management in North America

\$5.9 billion
net sales in 2008



With an active international presence, we have more than 60 subsidiaries and offices, and sales in close to 180 countries.

YOUR PARTNER FROM THE **START.**



For years, A/V installation has been an afterthought in the remodeling and construction of buildings, leaving integrators with the challenge of creating work-around solutions. But today, through Wiremold® Pathways and Ortronics® Connectivity, we are changing the way integrators work, by integrating A/V into our broad product line from the start.

Experience

- Over 100 years of experience in pathway solutions
- The market leader in cable management
- Broadest product line in the industry
- Cross-trade experience assures proper integration of power, communication, and A/V into our products

The Best Service and Support

- Superior fill rates – over 95% by line item
- Factory-Direct Local Sales Specification Consultants help you with any product needs
- Online support tools available



By designing A/V into our products up front, we make your A/V job easier.

Wiremold Poke-Thru Devices are the ideal solution for bringing power, A/V, and communication connections to open space, above-grade floor environments while maintaining the Fire Classification of concrete floors. **Wiremold** Poke-Thru Devices are the most complete offering in the industry including Evolution™ and AV3 Series™ Poke-Thru Devices, which are compatible with A/V connectivity devices from most major manufacturers.

Evolution™ Series Poke-Thru Devices



Evolution™ Series Poke-Thru Devices allow installed devices to be recessed below floor level, and provide the largest capacity available – up to 4-gangs of capacity for power, A/V, or communication devices.



FEATURES

- Largest Capacity Poke-Thru Device in the industry.
- Fully recessed devices.
- Open power, communication, and A/V configurability.
- Die-cast cover assemblies.
- Accepts wide range of power, communication, and A/V configurations.
- Two (2) Hour UL Fire Classified.
- Meets ADA Accessibility Guidelines – Tile cover is flush with the finished floor covering.
- Available pre-assembled or fully configurable.
- TopGuard® Protection – meets or exceeds UL scrub water requirements.

AV3 Series™ Poke-Thru Devices



AV3 Series™ Surface Style Poke-Thru Devices have the capacity to accept one (1) 20 Amp duplex power device and up to three (3) Extron® Electronics MAAP Series device plates.

FEATURES

- Designed to meet the needs of the growing A/V Industry.
- Accepts wide range of power, communication, and A/V configurations.
- Meets ADA Accessibility Guidelines – Tile cover is flush with the finished floor covering.
- TopGuard Protection – meets or exceeds UL scrub water requirements.
- Two (2) Hour UL Fire Classified.

4FFATC Series™ Poke-Thru Devices



4FFATC Series™ Furniture Feed Style Poke-Thru Devices provide one (1) 3/4” trade size opening for power and one (1) 1 1/4” trade size opening for A/V or communication.

FEATURES

- Largest dual capacity furniture feed poke-thru device.
- UL listed for both power and communications applications.
- Suitable for use in air handling spaces.
- “Step-on-it” quick and easy installation.
- Meets ADA Accessibility Guidelines – Tile cover is flush with the finished floor covering.
- TopGuard Protection – meets or exceeds UL scrub water requirements.
- Two (2) Hour UL Fire Classified.

Wiremold products accept Ortronics® Series II® and TechChoice® communication and A/V devices. Wiremold Open A/V system accepts most manufacturers’ A/V devices including Extron® Electronics, Crestron®, and Altinex, Inc.

Wiremold Floor Boxes are ideally suited to provide power, A/V, and communication services to open spaces in new construction. For use in concrete and wood floor applications and available in a wide range of sizes and finishes, **Wiremold** Floor Boxes are the broadest line of floor boxes in the industry, and the first, and only family of Fire Classified Floor Boxes available today.

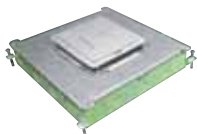
Resource RFB Series Floor Boxes



Resource RFB® Series Floor Boxes offer configuration flexibility using independent wiring compartments and feed-through wiring capability for power, communication, and A/V services to open spaces or directly to work stations.

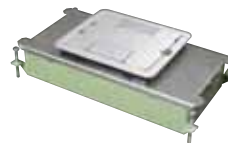
FEATURES

- UL Listed to U.S. and Canadian safety standards for tile, terrazzo, carpet, and wood covered floors. Meets and exceeds UL requirements under UL514A for scrub water exclusion.
- Available in 5 configurations; 2-gang, 4-gang, 6-gang, 9-gang, and 11-gang.
- Available in various depths to accommodate both shallow and deep concrete pours.
- Fully adjustable before and after the concrete pour.
- RFB9 and RFB11 Floor Boxes are provided with heavy duty cover assembly to accept loads up to 3,000 pounds.
- Open system allows for compatibility with most power, communication, and A/V manufacturers' devices.



RFB2 Series

Two compartment, steel combination floor box. Available in both shallow and on-grade versions. Fully adjustable.



RFB6 Series

Six compartment, steel, on-grade combination floor box. Fully adjustable.



RFB4 Series

Four compartment, shallow depth, combination floor box. Available in steel or cast iron. Fully adjustable.



RFB9 & RFB11 Series

Large capacity, steel floor box. Meets special space requirements of A/V type connectors to above-grade floors.

Fire Classified Floor Boxes



Fire Classified Floor Boxes meet or exceed UL Fire Classification requirements for floor boxes eliminating the need for additional spraying or fireproofing in order to preserve the two hour fire rating for concrete floors.

FEATURES

- UL Listed and UL Fire Classified to U.S. and Canadian safety standards for tile and terrazzo. Preserves up to a two-hour fire rating for floors. Eliminates the need to install additional fireproofing to maintain the floor's fire rating. Provides peace of mind for building owners, general contractors, installers, and inspectors that floors meet safety guidelines.
- Available in one-, two-, three-, and four-gang configurations in both flush and recessed designs.
- Accepts existing floor box covers. Allows for a consistent aesthetic finish.
- Fire rated floor boxes provide multiple service and capacity options and can be installed 2 feet on center for increased accessibility to services for occupants.



OmniBox Series

Available in 1-, 2-, or 3-gangs, provides greater flexibility in capacity. Fully adjustable box before and after concrete pour for lower installed cost. Concrete-tight, stamped steel construction for lower cost option for above grade applications.



Ratchet-Pro Series

Dual service, round, nonmetallic floor box. Patented ratchet adjusting ring allows connection of cover flange without glue or mechanical fasteners.



Resource RFB Series

4-compartment recessed floor box in both deep and shallow versions. Fully adjustable before and after pour. Accepts most manufacturers' power, communication, and A/V devices.



880MP Series

Rectangular nonmetallic floor box provides modular design and gangability. Patented ratchet adjusting ring allows connection of cover flange without glue or mechanical fasteners.

Wiremold products accept Ortronics® Series II® and TechChoice® communication and A/V devices.

Wiremold Open A/V system accepts most manufacturers' A/V devices including Extron® Electronics, Crestron®, and Altinex, Inc.

Wiremold FloorSource™ Raised Floor Boxes offer power, communication, and A/V solutions for raised floor applications. A variety of floor boxes designed especially for raised floors provide all the functionality, flexibility, accessibility, and capacity your application requires. Ideal for IT server rooms, computer labs, and financial, commercial, and educational institutions.

FloorSource AF Series™ Raised Floor Boxes



FloorSource AF Series™ Raised Floor Boxes provide point-of-use activations for multiple power and communications devices while offering greater flexibility relating to adds, moves, and changes within a standard and shallow raised floor application. FloorSource AF Series Raised Floor Boxes can also be equipped with Walkerflex Modular wiring components.

FEATURES

- Locking tabs secure floor box to floor allowing quick and easy installation.
- Units can be prewired for power.
- Large multi-compartment boxes provide adequate wiring capacity and separation of A/V, power, and communication services.
- Multiple profiles and capacities available in different depths to meet different raised floor system requirements.
- Configurable – can be field-configured or reconfigured to accommodate power only, communication only, A/V only, or combinations of all three in one unit.

FloorSource AC Series™ Raised Floor Boxes



FloorSource AC Series™ Raised Floor Boxes provide point-of-use activations for multiple power and communications devices while offering greater flexibility relating to adds, moves, and changes within the raised floor. FloorSource AC Series Raised Floor Boxes can also be equipped with Walkerflex Modular wiring components.

FEATURES

- Locking tabs secure floor box to floor allowing quick and easy installation.
- Units can be prewired for power.
- Large multi-compartment boxes provide adequate wiring capacity and separation of A/V, power, and communication services.
- Multiple profiles and capacities available in different depths to meet different raised floor system requirements.
- Configurable – can be field-configured or reconfigured to accommodate power only, communication only, A/V only, or combinations of all three in one unit.

FloorSource CRFB Series™ Raised Floor Boxes



FloorSource CRFB Series™ Round Raised Floor Boxes provide accessibility and capacity for both power and communications in a recessed round floor box that meets the functionality and flexibility needs of Access Floor customers.



FEATURES

- Locking tabs help secure box to floor panel for quick and easy installation.
- Prewired and custom plate options. Prewired units reduce labor costs for field installation.
- Large multi-compartment boxes provide increased wiring capacity and isolate A/V, power, and communication services.
- CRFB Raised Floor Boxes are designed to be installed after floor coverings have been installed.
- Configurable – can be field-configured or reconfigured to accommodate power only, communication only, A/V only, or combinations of all three in one unit.
- Compatible with raised stages. CRFB Series Floor Boxes are designed to be used in raised stage applications such as: altars and balconies.

Wiremold products accept Ortronics® Series II® and TechChoice® communication and A/V devices.

Wiremold Open A/V system accepts most manufacturers' A/V devices including Extron® Electronics, Crestron®, and Altinex, Inc.

Wiremold Work Surface Solutions bring power, communication, and A/V connections right where they're needed – on the work surface, with ideal solutions for everything from workstations to conference room tables.

deQuorum™ Work Surface Portals



Portal
deQuorum™ Work Surface Portals provide flexibility in décor, power, communication, and A/V connectivity options, and installation to meet specific functional and aesthetic needs. Portals are recessed and covers can be closed during use to make them unobtrusive.



Flip-Up
deQuorum™ Work Surface Portals bring technology to the user in conference tables and workstations. Flip-Up Portals bring the modules above the work surface when needed for easy access.

FEATURES

- deQuorum Work Surface Portals can be configured to meet most A/V, power, and/or communications requirements including UTP, video, and fiber optics.
- Cable management – A separate compartment provides cable management below the mounting surface.
- Gasketed Receptacle – Two 15A or 20A spec grade receptacles are dust and moisture resistant.
- Hinged or spring-activated flip-up lid options provide access for making connections. Hinged option can be closed during use making the portal unobtrusive.
- Configurable – can be field-configured or reconfigured to accommodate power only, communication only, A/V only, or combinations of all three in one unit.
- Cover & Finish options – choose from a variety of finishes and several cover options including a recessed cover that can accept a wide range of laminates and veneers.

TableSource™ Work Surface Modules



TableSource™ Work Surface Modules provide flexibility in décor, power, communication, and A/V connectivity options, and installation to meet specific functional and aesthetic needs. Work Surface Modules are stand-alone units that can easily be added to any work area and require minimal and adaptable installation.

FEATURES

- Durable aluminum construction. Sturdy enough for long-term use in high activity applications such as public schools, libraries, and universities.
- Backsplash bracket designed to provide quick and secure installation without marring the work surface.
- Gasketed 15A specgrade receptacle is dust and moisture resistant. Meets latest UL spill test requirements against accidental spills.
- Cord-ended model provides easy installation and mobility.
- Field wired option – Add a whip to field wire your solution.
- Finish options – Modules are available in a clear anodized aluminum finish or can be painted to complement any décor.
- Configurable – Design your own custom TableSource Module.
- Datacom connectivity options. Accepts industry standard and proprietary devices from a wide range of manufacturers to provide a seamless and aesthetically pleasing communications interface at the point-of-use.

Wiremold products accept Ortronics® Series II® and TechChoice® communication and A/V devices.
Wiremold Open A/V system accepts most manufacturers' A/V devices including Extron® Electronics, Crestron®, and Altinex, Inc.

Wiremold Vista™ Architectural Columns offer an array of customizable solutions for the A/V professional. These aesthetic columns can be used to feed numerous workstations, supply connections to a large area, or as a table leg to provide power, A/V, and communications to work surfaces. No matter what the capability, finish, fit, or style you need, Vista Architectural Columns are your vertical solutions answer.

Vista™ Architectural Column



Vista™ Architectural Columns provide configurable solutions for power, A/V, wireless, and communication services in open spaces.



FEATURES

- Flexibility – Select from a range of panels, frame shapes, extensions, and frames to accommodate aesthetic and capacity requirements.
- Center panels are available in stylish finishes and color options including wood, glass, and fabrics to enhance any décor.
- Add virtually any commercially available lighting fixture.
- Furniture feed options – Modular furniture feeds are available at the beltline and ground level.
- Extension kit accommodates many ceiling heights and now comes with a center panel.
- Device compatibility. Compatible with a wide range of standard A/V, power, and communications devices.
- On-line design tool. Visit www.wiremold.com/vista to design your own Vista Architectural Column.

Vista™ CP Consolidation Point



Vista Architectural Columns are an aesthetically pleasing way to provide power and communications in open space areas. The Vista Consolidation Point (CP) provides channels that conceal wires and cables behind a decorative center panel, and incorporates a user-installed patch panel with easy, secured access through a lockable door.



FEATURES

- Flexibility – Select from a range of panels, frame shapes, extensions, and frames to accommodate aesthetic and capacity requirements.
- Center panels are available in stylish finishes and color options including wood, glass, and fabrics to enhance any décor.
- Add virtually any commercially available lighting fixture.
- Furniture feed options – Modular furniture feeds are available at the beltline and ground level.
- Extension kit accommodates many ceiling heights and now comes with a center panel.
- Device compatibility. Compatible with a wide range of standard A/V, power, and communications devices.
- On-line design tool. Visit www.wiremold.com/vista to design your own Vista Architectural Column.

Vista™ Point5 Architectural Column



The Vista Point5 provides power, communication, and A/V connections without disrupting conference spaces. Mounted on the floor, the Vista Point5 can nestle into the center of a contemporary conference table or double as one of the support legs. Clear access to outlets and jacks keeps the floor free from running cords and cables. And, the Vista Point5 offers easy communications connections for up to eight users. Make the most of any meeting space with the Vista Point5.



FEATURES

- Flexibility – Select from a range of panels, frame shapes, extensions, and frames to accommodate aesthetic and capacity requirements.
- Choice of heights to accommodate different work surfaces.
- Internal barrier permits A/V, electrical, and communications devices to be installed next to each other without interference.
- The Point5 exceeds UL's Office Furnishings 1286 Stability test for force and impact.
- Device compatibility. Compatible with a wide range of standard A/V, power, and communications devices.
- On-line design tool. Visit www.wiremold.com/vista to design your own Vista Architectural Column.

Wiremold products accept Ortronics® Series II® and TechChoice® communication and A/V devices. Wiremold Open A/V system accepts most manufacturers' A/V devices including Extron® Electronics, Crestron®, and Altinex, Inc.

Wiremold Surface Raceway Systems provide efficient, cost-effective, and attractive ways to bring connections wherever they're needed in virtually any type of room. Available in a variety of sizes, capacities, and materials, including aluminum, steel and nonmetallic – **Wiremold** raceway systems are designed to install easily, perform flawlessly, and blend beautifully with any décor. And now, they have designed-in compatibility for A/V applications.

DS4000® Series Raceway



Dual-channel raceway with increased capacity due to its unique profile, integral divider, and downward facing activations. Ideal for any application that requires a high capacity metal raceway.



FEATURES

- Aesthetic, curved profile offers increased wiring capacity over conventional raceway profiles.
- Innovative Adjust-to-Fit™ Couplings.
- Pre-scored integral divider with predrilled knockouts.
- Downward facing activations provide protection for service connections.
- Bend radius control and obstacle avoidance fittings.
- Faster, easier installation than conventional raceway systems.
- Ideal for applications that require a high capacity metal raceway.
- Available prewired for fast track construction.
- Expanded color palette.

2400 Series™ & 2400D Series™ Raceway



Single- or dual-channel raceway. Easy-to-install and ideal for basic power or communication/low voltage installations in classrooms, hotels, and anywhere a low profile raceway solution is needed.



FEATURES

- Low profile raceway available in both single- and dual-channel versions.
- Ideal for classrooms, hotel, and office applications.
- Open power, A/V, and communication configurability.
- Downward facing activations.
- One-gang, two-gang, and over-the-raceway device boxes.
- In-line field-configurable receptacles.
- Full 2" [51mm] bend radius control fittings.
- Bridge fittings for crossing existing 500®, 700®, and 2400 Series™ Raceway installations.

5400 Series™ Raceway



5400 Series Raceway provides wire and cable management for power, communication, and A/V applications. For school and office installations, this is an ideal solution for providing access to services while maintaining wire and cabling flexibility.

FEATURES

- Large cable capacity in a low profile design – Accommodates needs now and in the future.
- Twin Snap cover – Complete segregation of access to power and low voltage services for installation flexibility.
- FiberReady Series Fittings snap on to overlap raceway for an aesthetic installation. Fittings are UL verified for a 2" [51mm] bend radius and exceed the recommendations of TIA/EIA 569-A.
- Corner drop feed – aesthetically pleasing solution for feeding horizontal runs of raceway.

Overfloor Raceway



1200/1400/1600 Series Pancake Raceway provides permanent or temporary protection for overfloor cabling in high traffic areas. 1500 & 2600 Series™ Steel Pancake Raceway provides permanent protection for overfloor cabling in high traffic areas.

FEATURES

- Simple, effective solutions for running cabling over a floor.
- Low profile configuration, covers cords, reduces trip hazards.
- Brings power, communication, and A/V wiring to any location.
- Designed to withstand normal office traffic.
- 1200, 1400, and 1600 Series™ profiles are available in a flexible nonmetallic construction.
- 1500 and 2600 Series™ profiles are available in a galvanized steel construction.

Wiremold products accept Ortronics® Series II® and TechChoice® communication and A/V devices. Wiremold Open A/V system accepts most manufacturers' A/V devices including Extron® Electronics, Crestron®, and Altinex, Inc.

Why settle for the clutter of multiple wall boxes? **Wiremold** In-Wall Systems bring multiple services – power, A/V, and communication – together to a single wall location, for a cleaner look and greater flexibility.

WallSource™ Service Boxes



WallSource™ Multiple Service Boxes are six-gang boxes that can accommodate multiple services including power, communication, and A/V, eliminating multiple drops and uneven wall faceplates.



FEATURES

- Designed to accommodate multiple services in a single device box. Accepts power, communication, and A/V services in a single location.
- Up to six-gangs of service capacity. Provides depth and capacity for multiple types of devices.
- Improves room aesthetics by eliminating the need for multiple wall plates and device boxes for multiple services.

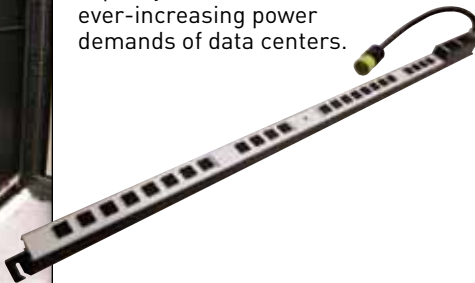
POWER & DATA QUALITY

From a simple power outlet strip, to a surge protected, network controlled power distribution unit (PDU), **Wiremold** power products offer the A/V professional a complete line of power distribution systems. Whether you need to provide power protection to a workstation, a rack, or an entire building, **Wiremold** power products deliver the quality power you need.

Power Commander® Plus



Power Commander® Plus High Current Power Distribution Units offer the capacity to meet the ever-increasing power demands of data centers.



FEATURES

- 50Amp & 60Amp power distribution.
- Three-circuit design.
- UL489 breakers.
- 50A single phase design.
- IEC receptacles.
- Easy swivel mounting.

Power Commander® IQ



Power Commander® IQ Power Distribution Units offer remote current and temperature monitoring of connected equipment and individual outlet control for power recycling.



FEATURES

- Remote current & temperature monitoring.
- Individual outlet control for power recycling.
- Early warning of potential power or environmental problems.
- Remote power management for UP/Down sequencing of equipment.
- Network security.
- Multiple alarm notification options.

Wiremold products accept Ortronics® Series II® and TechChoice® communication and A/V devices. Wiremold Open A/V system accepts most manufacturers' A/V devices including Extron® Electronics, Crestron®, and Altinex, Inc.

Ortronics Connectivity offers a full line of audio, video, and data connectivity options that integrate seamlessly into **Wiremold** pathway products with a variety of faceplates and surface mount boxes. With **Ortronics A/V** connectivity, you get a reliable solution that supports the flexibility, modularity, and density needed in today's applications.

Series II® Connectivity

Ortronics Series II connectivity offers ease and reliability in a rugged, front-loading module that supports integration into **Wiremold** devices with the broadest range of faceplate options.



FEATURES

- Integration with Wiremold Evolution™ Series Poke-Thru Devices.
- Compatibility with a wide range of Wiremold pathway solutions.
- Wide variety of A/V and data connector choices.
- Available in a variety of termination styles.
- Integration of A/V and data in a single footprint.
- Rugged thermoplastic construction for secure fit.
- Recessed label fields.

TechChoice® Keystone Connectivity

Ortronics keystone modules offer a variety of connector type configurations that are easy to use and deploy.



FEATURES

- Integration with Wiremold solutions.
- Compatibility with Ortronics Series II connectivity with use of bezel.
- Rugged thermoplastic construction for durability.
- Rear loading modules with secure fit.
- Available in a variety of connector and termination styles.

TechChoice® Patch Cords

Ortronics TechChoice patch cords are factory terminated and pre-tested for component performance, making them ideal for reliable network connectivity.



FEATURES

- Slim modular plug design.
- Snagless boot for ease of use.
- Available in seven colors.
- Available in 3, 5, 7, 10, 15, and 25 ft. lengths.
- Each cable is pre-tested for component performance.

Ortronics® Series II® and TechChoice® communication and A/V connectivity are compatible with the Wiremold pathways shown on previous pages.

designed to be better.

Legrand
60 Woodlawn Street
West Hartford, CT 06110
Phone: 1.877.295.3472
Fax: 1.860.232.2062
legrand.us/AV

© 2009 Legrand. All Rights Reserved. ED1601 609

Ortronics

Wiremold

