



Posi-Max Series Portable Power Solutions

COOPER Crouse-Hinds



- Data Centers
- Cell Towers
- Pharmacies
- Banks
- Retail
- Water Treatment
- Utilities
- Gas Stations
- Toll Roads

Factory wired to distribution block for ease of installation. Easily installs from breaker to box to side of wall

Tool free, quick release latches along with the padlock hasp for lockout/tagout compliance



Color coded polarity for easy recognition of mating plug

Gasketed doors for Nema 3R, 12 rating - ideal for wet and inclement weather

Posi-Lok Power Distributor system allows for use of lighter, single conductor cables rated at higher amperages

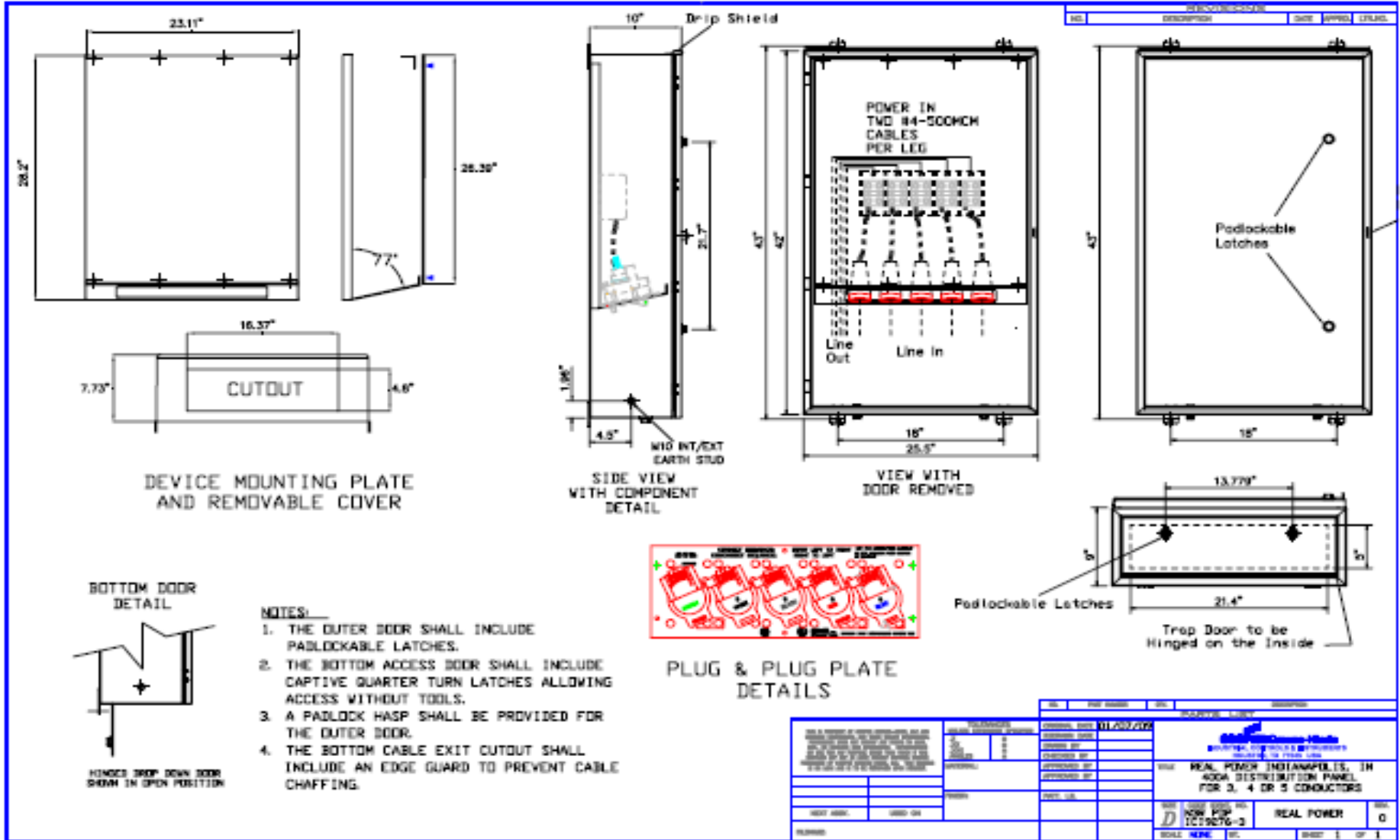
Quick access cable door for ease of entry in any environment

Sequential port interlock connections offer built-in safety that requires users to connect or disconnect each plug in sequence



Posi-Max Series from Cooper Crouse-Hinds
Your turnkey solution for safe power restoration

Posi-Max AutoCAD Drawing



NO.	REV	DESCRIPTION	DATE	APP'D	CHK'D
1					

<p>ALL DIMENSIONS UNLESS OTHERWISE SPECIFIED SHALL BE IN INCHES AND FRACTIONS THEREOF.</p> <p>ALL DIMENSIONS UNLESS OTHERWISE SPECIFIED SHALL BE IN MILLIMETERS AND DECIMALS THEREOF.</p>	<p>DATE: 11/20/2009</p> <p>DESIGNED BY: []</p> <p>CHECKED BY: []</p> <p>APPROVED BY: []</p> <p>DATE: []</p>	<p>PROJECT: REAL POWER INDIANAPOLIS, IN 400A DISTRIBUTION PANEL FOR 3, 4 OR 5 CONDUCTORS</p> <p>SCALE: N/A</p> <p>SHEET: 1 OF 1</p>
---	---	---

400A Posi-Max

Electrical Contractor Solutions

All models feature a high visibility OSHA safety red, polyester powder-coated weather resistant enclosure.

Hinged door protects circuit breakers from the elements.

Weatherproof outlet covers are labeled to easily identify electrical ratings.

GFCI circuit breakers are manual reset to restore power in the event of a ground fault.

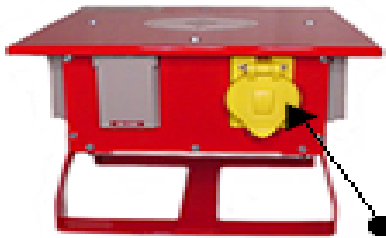
Each 20 Amp & 30 Amp outlet is individually protected with its own circuit breaker.

Heavy-Duty "CS" (California Style) 50 Amp 125/250V power inlet.

UV rated lexan window permits easy viewing of "Visi-Trip" circuit breakers.

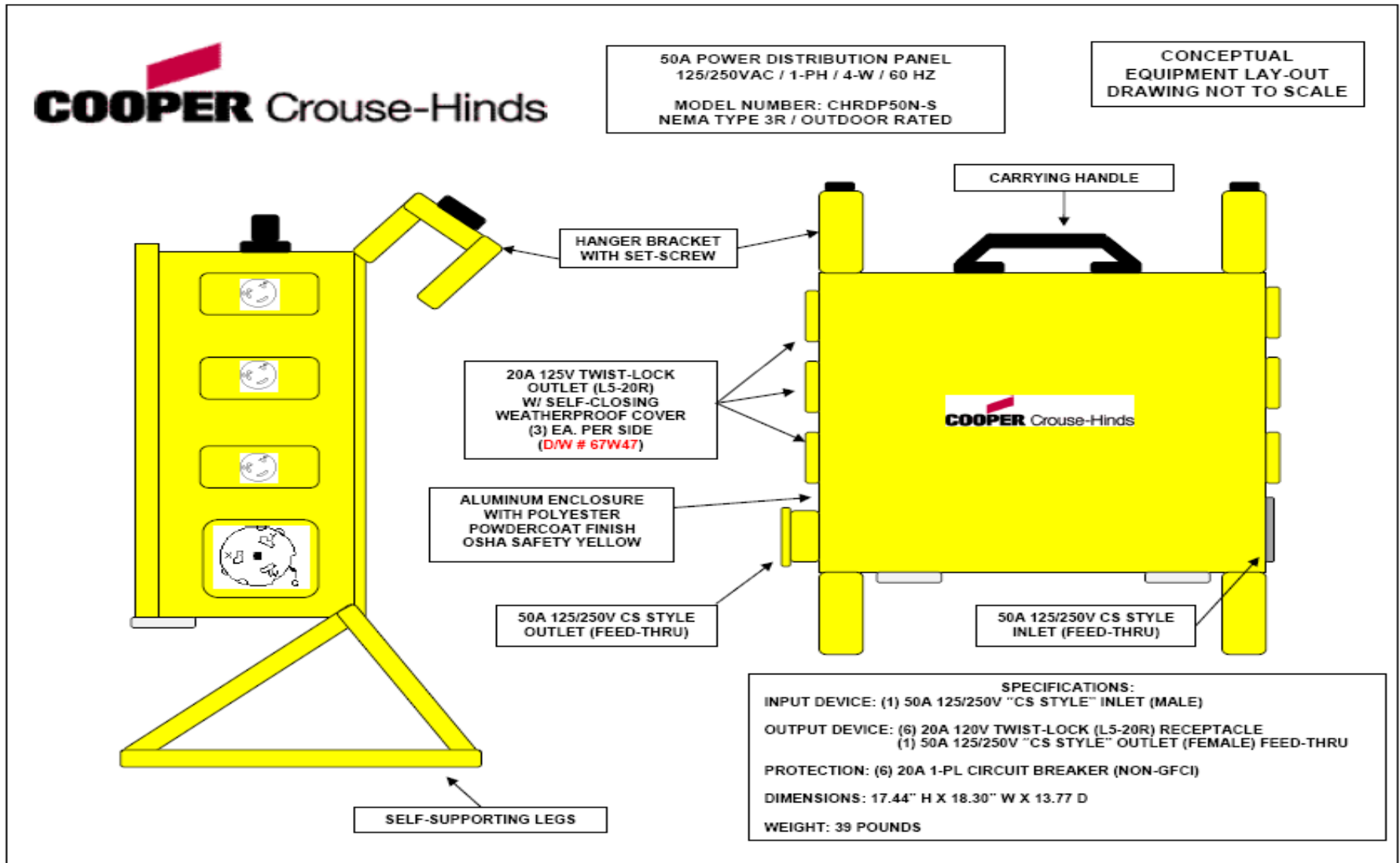
Sturdy heavy-duty steel legs that are reinforced to withstand abuse and provide long lasting performance.

Heavy-Duty "CS" (California Style) 50 Amp 125/250V power outlet for feed-thru capability.



SPIDER BOXES

HANGING SPIDER BOX



Customized Solution using various receptacles

Entertainment Solutions



↑
100A Quad



↑
100A Edison



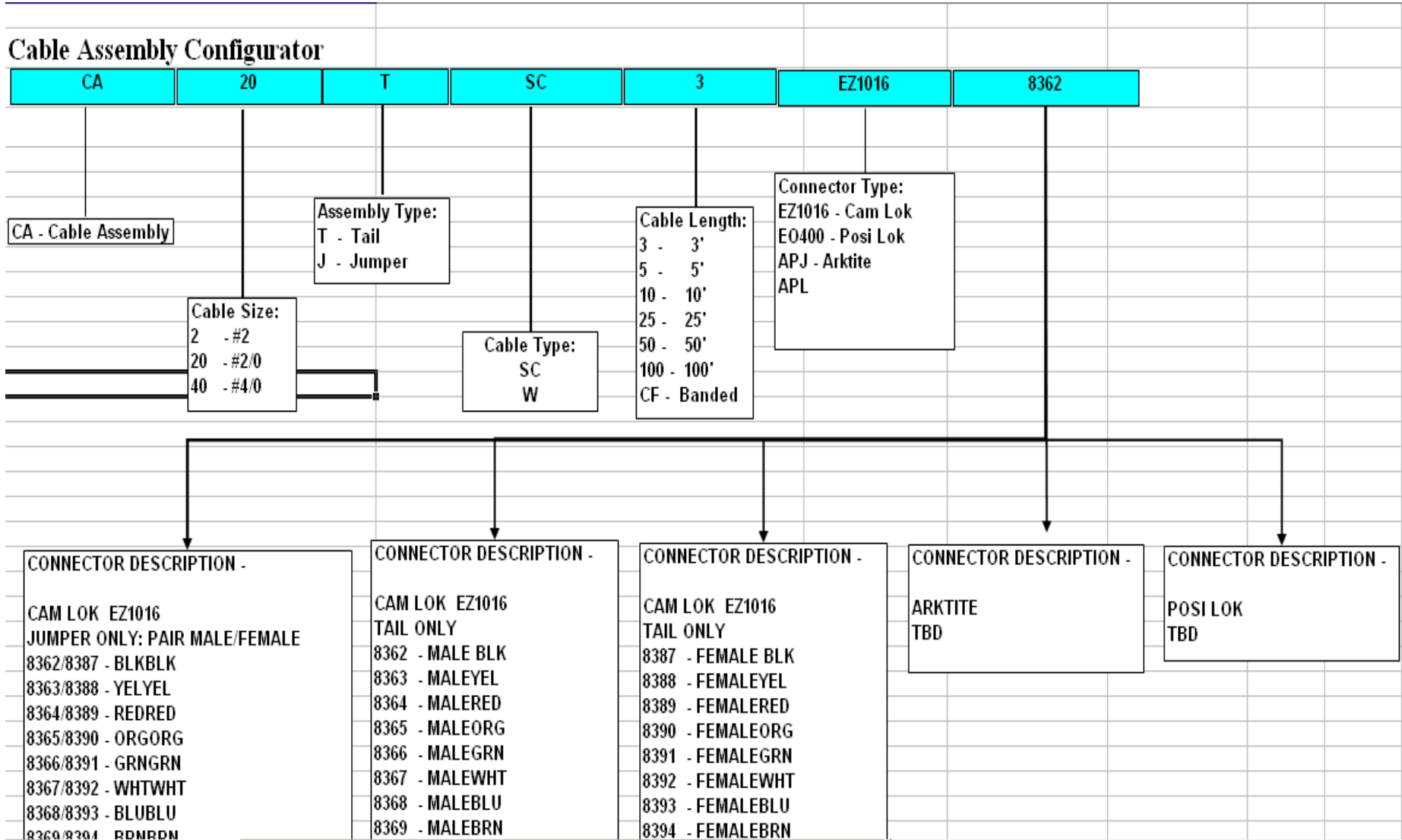
↑
**200A
Splitter
Panel**

Cord Sets & Cable Assemblies



- **Cam-loks**
- **IEC309**
- **Ark-tite**
- **Krydon**
- **Posi-lok**

Cable Assembly Configurator



Simple Construction of Cord Set Part Number

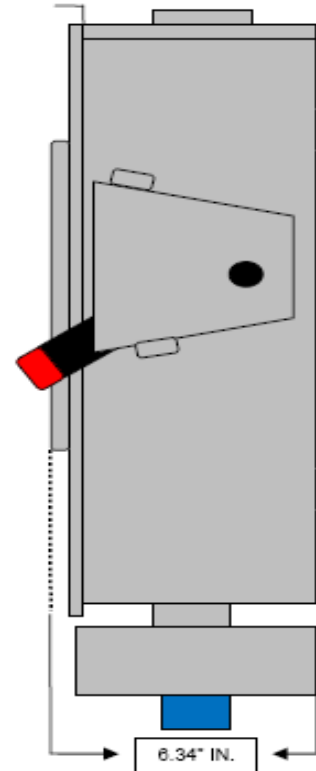
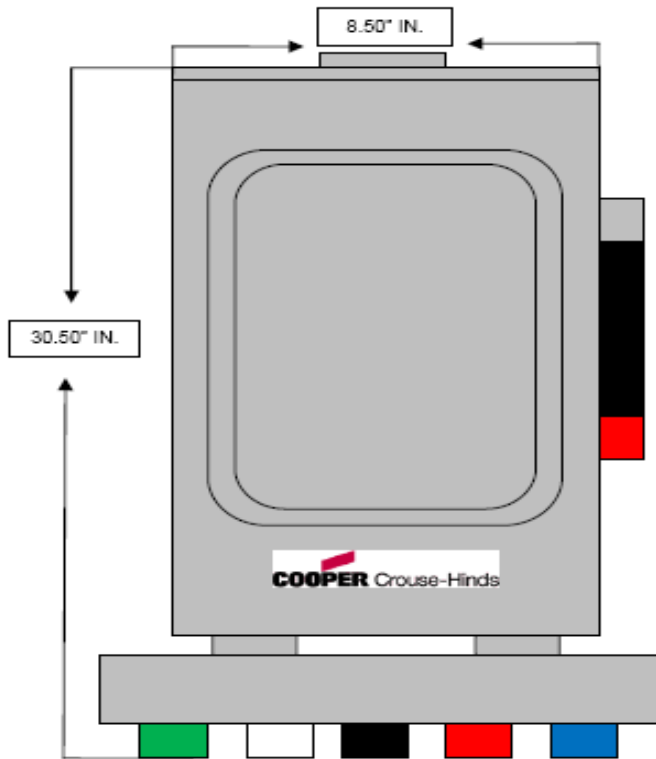


Customized transformer solutions

100A Fused Cam-Lok Enclosure



MODEL NO. SQDH363RB-SO
100A SAFETY SWITCH / FUSED
NEMA TYPE 3R / OUTDOOR RATED
600VAC 3-WIRE (3-BLADE)



OUTPUT:
ONE (1) EACH 400 AMP RATED 5-WIRE SET COLOR-CODED CAM-LOK OUTPUT (FEMALE) RECEPTACLES (16 SERIES).
GREEN = GROUND / WHITE = NEUTRAL / BLACK = LINE 1 / PHASE / RED = LINE 2 / PHASE / BLUE = LINE 3 / PHASE

CONCEPTUAL
EQUIPMENT LAY-OUT
DRAWING NOT TO SCALE

Available in 200, 400, & 600A

TEMPORARY POWER



ROLL-AROUND CART

Refinery & Heavy Industrial



2 & 4 Wheel Temporary Power Solutions



Temporary Power Skid & Stand Options



- **Customized Solutions**
- **Several kVA options available**

Additional Options



200A Safety Disconnect Cart

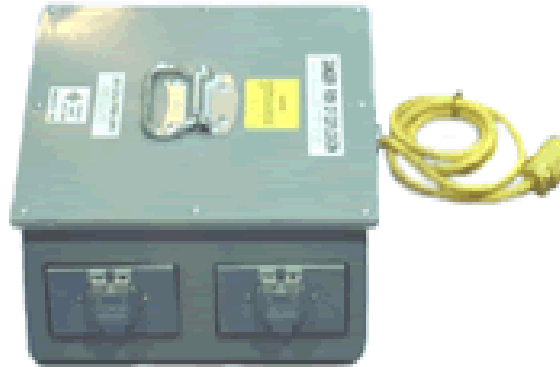


400A Cam-lok Splitter Box

Portable Lighting Solutions



Class 1 / Div 1
400W – Metal
Hallide
Floodlight



Transformer –
Four Outlet
120V w/ Circuit
Breaker
protection



Stringlight
Transformer
120V

Lighting Solutions – Various Applications